

MEWP Familiarization: MEC MMAE16

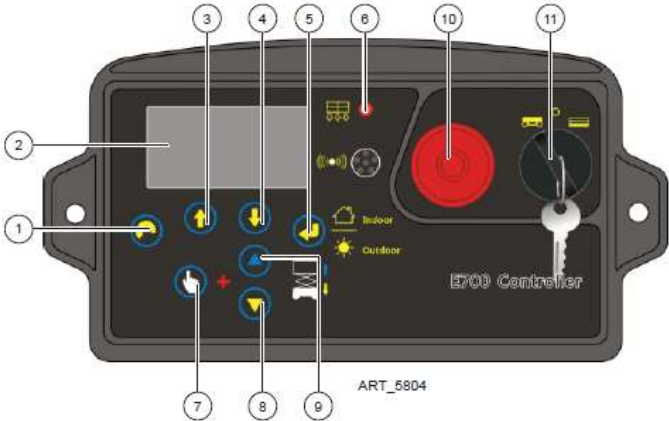
MMAE16 Familiarization

(ANSI A92.22 6.2.5)

- 6.2.5.1 Prior to user's authorization of an operator to use a specific model of MEWP, the user must ensure the operator is familiarized on the following, and as specified by the manufacturer.
- Do not operate your MEWP until you have read and understood the Manufacturer's Operator Manual, have performed the workplace inspection, pre-start inspection, routine maintenance, and have completed all the test operations detailed in the operating instructions section of your manual.
- Manual location is in manual enclosure on the inside of the front guardrail.
- Confirm that the required manual(s) as specified by the manufacturer are with the MEC MME20.



Lower Control Panel



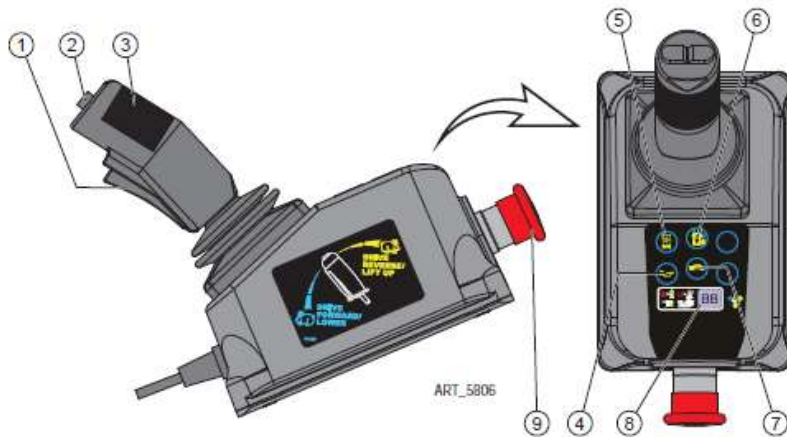
Control		Description
1	Menu Escape Button	Press this button to exit the Menu screen.
2	LED Readout Screen	Diagnostic readout and battery charge indicator.
3	Menu Up Button	Press this button to go up the Menu items.
4	Menu Down Button	Press this button to go down the Menu items.
5	Menu Enter Button	Press this button to enter the Menu screen
6	Overload Indicator Light	Light on indicates when platform is overloaded. Remove weight from the platform.
7	Function Enable Button	Press and hold this button along with either the Platform Down Button (#8) or the Platform Up Button (#9) to activate selected function.
8	Platform Down Button	Press and hold the Function Enable Button (#7) and this button then the platform with lower.
9	Platform Up Button	Press and hold the Function Enable Button (#7) and this button then the platform with rise.
10	Emergency Stop Switch	Press the EMERGENCY STOP switch at any time to stop all machine functions. Pull button out to the "ON" position to operate the machine.
11	Key Switch	PLATFORM Turn the key switch to the platform position and the platform controls will be selected.
		OFF Turn the key switch to the "OFF" position and the machine will be off.
		BASE Turn the key switch to the base position and the ground controls will be selected.

Selecting Indoor/Outdoor Mode:

To select the Indoor/Outdoor Mode press and hold both the Platform Down Button (#8) and the Platform Up Button (#9) for 3 seconds to switch to Indoor or Outdoor.

- **INDOOR**
 - Select to allow unrestricted height when not exposed to wind.
- **OUTDOOR**
 - Select to limit the maximum height when exposed to wind.

Upper Control



Control		Description
1	Function Enable Switch	Function Enable Switch for LIFT & DRIVE & STEER functions.
2	Thumb Rocker Switch	Press the thumb rocker switch in either direction to activate steer function.
3	Proportional Control Handle	DRIVE Proportionally controls Forward and Reverse travel.
		LIFT Proportionally controls Lift and Lower functions.
4	Horn Button	Press to sound warning horn.
5	Lift Select	Press this button to select the Lift function.
6	Drive Select	Press this button to select the drive function.
7	Drive Speed Button	Press this button to activate the slow or fast drive function.
8	LED Display	Indicates the state of battery charge and displays diagnostic codes when necessary.
9	Emergency Stop Switch	Press the EMERGENCY STOP switch at any time to stop all machine functions. Pull the button out to the "ON" position to operate the machine.

Lift function

- Press the Lift Select switch. Squeeze the Function Enable Switch then move the control handle in the direction indicated by the yellow arrow and the platform will raise. Squeeze the Function Enable Switch then move the control handle in the direction indicated by the blue arrow and the platform will lower. The descent alarm will sound while the platform is lowering.

Drive function

- Press the Drive Select switch. Squeeze the Function Enable Switch then move the control handle in the direction indicated by the blue arrow on the control panel and the machine will move in the direction that the blue arrow points. Squeeze the Function Enable Switch then move the control handle in the direction indicated by the yellow arrow on the control panel and the machine will move in the direction that the yellow arrow points.

Additional Emergency Controls, Features & Limitations



Emergency Battery
Disconnect

Emergency
Lowering

- **Max. Platform Height:** 16 ft. Indoor / 12 ft. Outdoor
- **Max. Platform Capacity:** 500 lbs., 1 person
- **Deck Extension Capacity:** 250 lbs.
- **Max. Chassis Inclination:** 1.5° side, 3° inline
- **Max. Wind Speed:** 28 mph (45 kph) outdoors
- **ELECTROCUTION HAZARD! THIS MACHINE IS NOT INSULATED!**
- See operator's manual for additional information and instructions for safe use.

Operating Characteristics

Features:

- All-Electric Drive, Lift & Steer (No Hydraulic Oil)
- Up to 16 ft. Platform Height Indoors and 22 ft. Working Height Outdoors
- Roll out Deck Extension (20") with incremental locking position
- Data Centers, Food and Pharmaceutical Applications
- Non-Marking Tires
- Hour Meter

Options:

- Inverter
- Cold Weather Package
- Proactive Platform Safety System® (PPSS) senses overhead obstructions
- Tool Tray
- Second Year Extended Warranty

*See operator's manual for specific options and feature characteristics.

For More Information

Contact your local Dealer, Rental Provider or MEC Aerial Work Platforms.

MEC Aerial Work Platforms

- +1 (877) 632-5438
- +1 (559) 842-1500
- info@MECawp.com

MEC Parts

- +1 (559) 842-1523
- parts@MECawp.com

MEC Product Support

- +1 (559) 842-1537
- service@MECawp.com

MEC Address & Website

- 1401 S Madera Ave,
Kerman, Ca 93630
- www.MECawp.com

This information is provided as product familiarization as called for by ANSI A92.22. and CSA B 354. It is not intended to take the place of information provided by the MEC Operators manual or instruction provided by your equipment supplier. Further, all operators are to be trained before operating this equipment. Please contact MEC Aerial Work Platforms if you require additional information.

