

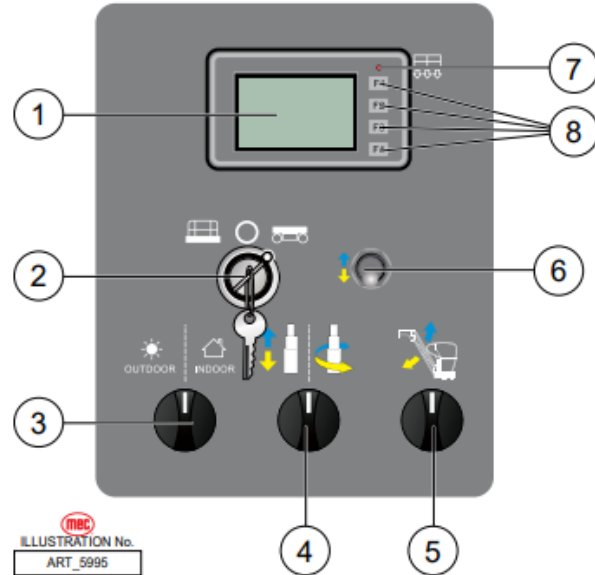
# MEWP Familiarization: MEC® MME30-RJ

# MME30-RJ Familiarization (ANSI A92.22 6.2.5)

- 6.2.5.1 Prior to user's authorization of an operator to use a specific model of MEWP, the user must ensure the operator is familiarized on the following, and as specified by the manufacturer.
- Do not operate your MEWP until you have read and understood the Manufacturer's Operator Manual, have performed the workplace inspection, pre-start inspection, routine maintenance, and have completed all the test operations detailed in the operating instructions section of your manual.
- Manual location is in manual enclosure on the inside of the front guardrail.
- Confirm that the required manual(s) as specified by the manufacturer are with the MEC MME30-RJ.

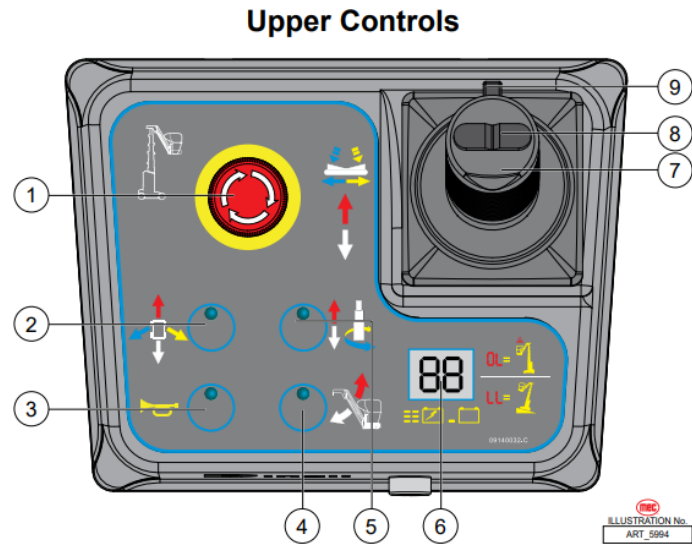


# Base Control Panel



| Control |                                    | Description   |   |
|---------|------------------------------------|---|---|
| 1       | LED Readout Screen                 | Diagnostic read out and battery charge indicator.   |   |
| 2       | Key Switch                         | PLATFORM  | Turn the key switch to the platform position and the platform controls will be selected.                    |
|         |                                    | OFF   | Turn the key switch to the "OFF" position and the machine will be off.                                      |
|         |                                    | BASE  | Turn the key switch to the base position and the ground controls will be selected.                          |
| 3       | Outdoor/Indoor Switch              | OUTDOORS  | Select to limit the maximum height when outdoors.   |
|         |                                    | INDOORS   | Select to allow unrestricted height when indoors.   |
| 4       | Mast / Turntable Select Button     | MAST  | Turn the switch to the left and hold, then press the Movement Select Switch (#6) to control the mast.       |
|         |                                    | TURNTABLE   | Turn the switch to the right and hold, then press the Movement Select Switch (#6) to rotate the turntable.  |
| 5       | Jib Lifting/Lowering Select Button | Turn the switch to the right and hold, then press the Movement Select Switch (#6) to control the jib.   |   |
| 6       | Movement Select Switch             | UP  | Press and hold the switch up to lift the mast or rotate the turntable clockwise or lift the jib.            |
|         |                                    | DOWN  | Press and hold the switch down to lower the mast or rotate the turntable counterclockwise or lower the jib. |
| 7       | Overload Indicator Light           | Light on indicates when platform is overloaded. Remove excess weight.   |   |
| 8       | Menu Buttons                       | When in the Menu screen, these buttons allow the user to go through the menu.<br>Press the first button to go up the Menu items.<br>Press the second button to go down the Menu items.<br>Press the third button to exit the Menu screen.<br>Press the fourth button to enter the Menu screen |   |

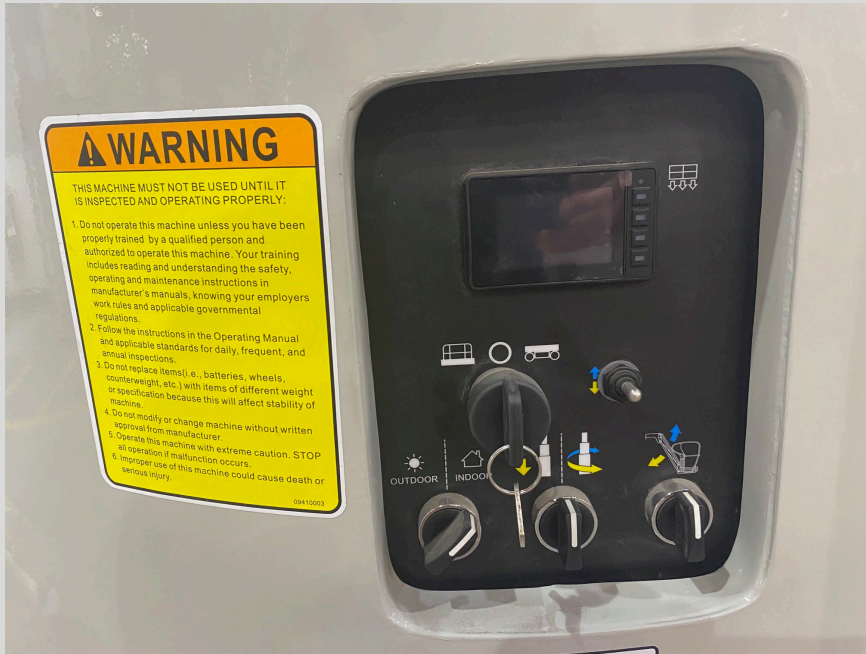
# Upper Controls



| Control |                             | Description   |
|---------|-----------------------------|---|
| 1       | Emergency Stop Switch       | Press the EMERGENCY STOP switch at any time to stop all machine functions. Pull the button out to the "ON" position to operate the machine.   |
| 2       | Drive Function Select       | Press this button to activate the drive function or the steer function.   |
| 3       | Horn Button                 | Press to sound warning horn.  |
| 4       | Jib Lifting/Lowering Select | Push the Jib Lift/Lower function select button to active the Jib Lift/Lower function.   |
| 5       | Mast/Turntable Select       | Push the Mast/Turntable Select function button to enable function of the Mast or Turntable.   |
| 6       | LED Readout Screen          | Diagnostic read out and battery charge indicator.   |
| 7       | Proportional Control Handle | <b>MAST</b><br>Press the Mast/Turntable button (#5) then squeeze the Function Enable Switch (#9). Move the control handle in the direction of the red arrow to lift the mast or move in the direction of the white arrow to lower the mast.   |
|         |                             | <b>DRIVE</b><br>Press the Drive Function button (#2) then squeeze the Function Enable Switch (#9). Move the control handle in the direction of one of the 4 colored arrows on the control panel and the machine will move in the same direction as the colored arrow.   |
|         |                             | <b>TURNTABLE</b><br>Press the Mast/Turntable button (#5) then squeeze the Function Enable Switch (#9). Press the thumb rocker in the direction of the blue arrow on the control panel and the turntable will move to the left or press the thumb rocker in the direction of the yellow arrow on the control panel and the turntable will move to the right. |
|         |                             | <b>JIB</b><br>Press the Jib Lift/Lower function button (#4) then squeeze the Function Enable Switch (#9). Move the control handle in the direction of the red arrow to lift the jib or move in the direction of the white arrow to lower the jib.   |
| 8       | Thumb Rocker Switch         | When the Drive Function is selected, press the thumb rocker switch to control the steer wheels. When the Mast/Turntable Select, press the thumb rocker switch to rotate the turntable.  |
| 9       | Function Enable Switch      | Function Enable Switch for LIFT, DRIVE/STEER, ROTATE, and JIB functions.  |



## Additional Emergency Controls, Features & Limitations



---

**Indoor Platform Height: 30 ft (9.2 m) :  
Outdoor Platform Height 27 ft (8.2 m)**

---

---

**Max. Platform Capacity: 500 lbs., 1 person**

---

---

**Maximum Horizontal reach 8 ft. 6 in (2.6 m) :  
Up and Over height 25 ft. (7.6 m)**

---

---

**Max. Wind Speed: 28 mph (45 kph) outdoors**

---

---

**ELECTROCUTION HAZARD! THIS MACHINE IS  
NOT INSULATED!**

---

---

**See operator's manual for additional  
information and instructions for safe use.**

---

# Operating Characteristics

## Features:

- In-Line Telescopic All-Steel Mast
- 345-degree Turntable Rotation & Jib
- In-line Telescopic All-Steel Mast
- AGM Maintenance-Free Batteries Standard
- Rugged Platform and Gate Construction
- Right Solution for Up-and-Over Hard to Reach Areas

## Options:

- 900W Inverter
- Cold Weather Package
- Second Year Extended Warranty

\*See operator's manual for specific options and feature characteristics.

# For More Information

Contact your local Dealer, Rental Provider or MEC Aerial Work Platforms.

## MEC Aerial Work Platforms

- +1 (877) 632-5438
- +1 (559) 842-1500
- [info@MECawp.com](mailto:info@MECawp.com)

## MEC Parts

- +1 (559) 842-1523
- [parts@MECawp.com](mailto:parts@MECawp.com)

## MEC Product Support

- +1 (559) 842-1537
- [service@MECawp.com](mailto:service@MECawp.com)

## MEC Address & Website

- 1401 S Madera Ave,  
Kerman, Ca 93630
- [www.MECawp.com](http://www.MECawp.com)

*This information is provided as product familiarization as called for by ANSI A92.22. and CSA B 354. It is not intended to take the place of information provided by the MEC Operators manual or instruction provided by your equipment supplier. Further, all operators are to be trained before operating this equipment. Please contact MEC Aerial Work Platforms if you require additional information.*

